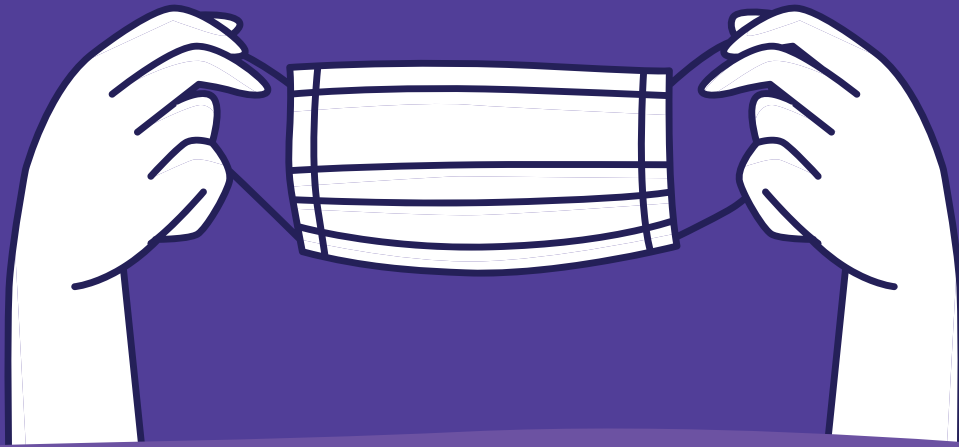


# Why all DHH students need visual access

*Sources: [hearingreview.com](http://hearingreview.com), The Moog Center for Deaf Education*



While students with hearing loss communicate in a variety of ways, they all benefit from visual cues and visual support.

- All masks, regardless of material, muffle speech
- There is a 4 - 12 dB difference in unmasked speech and masked speech, depending on the type of mask
- Communication is 55% visual (according to research by Dr. Albert Mehrabian)
- In an environment where the listeners could not rely on visual cues, they misunderstood masked speech significantly more often than unmasked speech
- American Sign Language is incomplete and unclear without facial expressions conveyed by the eyes and mouth



Facial expressions are not only a grammatical feature of American Sign Language, but they also give information about the feelings behind or significance of what is being said. In an environment where Deaf and Hard-of-Hearing students are more likely to miss verbal cues, access to visual cues is crucial. Consider this when choosing which PPE to teach in.

